



The Planning  
Inspectorate

# **National Planning Forum**

**1 March 2012**



The Planning  
Inspectorate

**PINS 2012**

**“The future Planning Inspectorate”**

**Peter Burley**

**Chief Planning Inspector (Designate)**



The Planning  
Inspectorate

# The Integration Project



The Planning Inspectorate  
Yr Arolygiaeth Gynllunio



1. As an **expert planning body**
2. For the exercise of **judicial skills and judgment**
3. For the delivery of an **excellent public service**



# Changing Structures

- **Abolition of IPC/creation of National Infrastructure Directorate within PINS**
- **Vesting day 1 April 2012**
- **Integration project/opportunity to review organisation**
- **New external reference group**





The Planning  
Inspectorate

# **1. An expert planning body**

- 400 staff and 280 inspectors

# **2. An impartial tribunal**

- 20,000 decisions and recommendations p/a



## Best of both worlds

### **PINS contributes**

- 100 years experience
- National reputation
- Wide variety of casework

### **IPC contributes**

- Big project experience
- High political profile
- New ways of working



The Planning  
Inspectorate

## Our aspirations...

**Mission:** To deliver an outstanding national planning and appeals service which enjoys the confidence and respect of ministers, the public and all stakeholders.

**Vision:** A healthy and high performing public sector organisation.



# Response to 2 strategic influences

## **Policy / Planning reform**

- Growth / Localism agenda
- National Planning Policy Framework (NPPF)
- Local Planning
- National Infrastructure Investment
- Planning Landscape

## **Public sector performance improvement**

- Efficiency / Productivity agenda
- Shared services
- Public service delivery



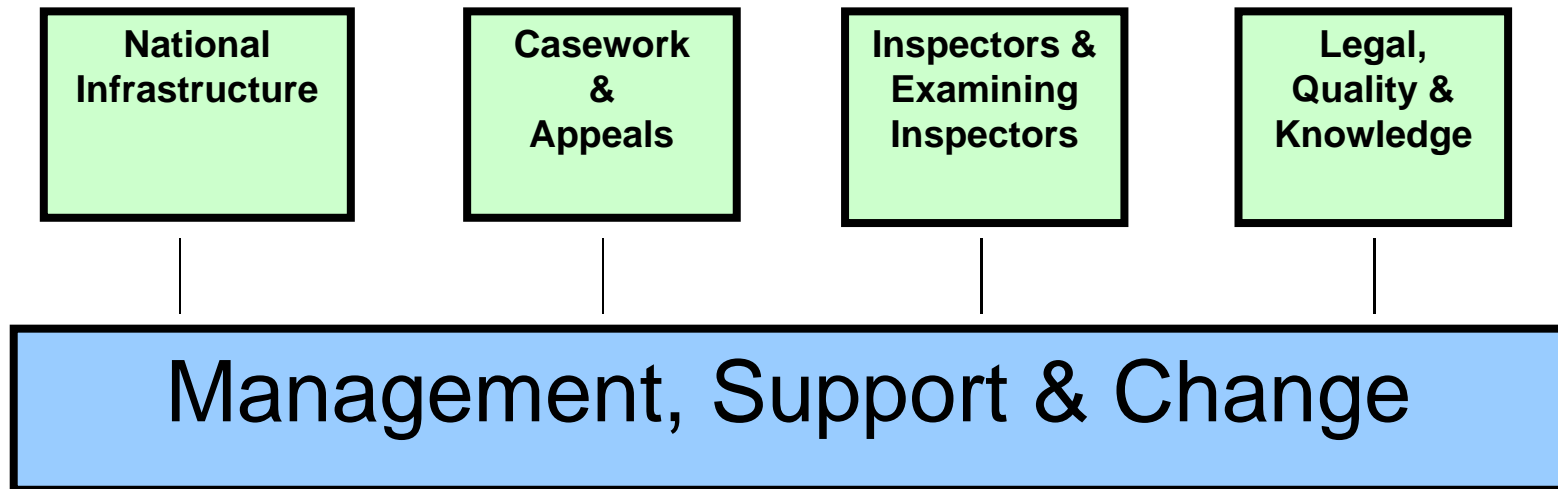


## **PINS-2012: Strategic Plan**

- Capacity / Capability
- Productivity
- Service and performance Standards
- Modernisation of processes / Use of technology
- Return on Investment
- Organisational Character (Culture)
- Flexibility / Adaptability
- Knowledge management



# Structure





# PINS 2012 Executive Board



**Mark Southgate**  
Casework & Plans



**Peter Burley**  
Chief Planning  
Inspector



**Mike Pitt**  
Chief Executive



**Ian Gambles**  
National  
Infrastructure



**Kevin  
Woodrow**  
Corporate  
Services



**Helen Adlard**  
Law & Quality



# The Planning Inspectorate

**Inspectors**



**Leadership  
&  
Performance  
Management**



**Casework  
Support**



**Briefing  
&  
Advice**



**Resources**



Relationships with the outside world

Ministers, Parliament, Welsh Government,  
DCLG, OGDs and the courts





## Localism (Act)

- Abolition of IPC and role of SofS
- Abolition of RSS, duty to cooperate, neighbourhood planning, CIL, duty to consult and predetermination rules

## The Economy and Speeding Up Investment

- Infrastructure
- Autumn Statement
- Planning Guarantee
- Appeals Review



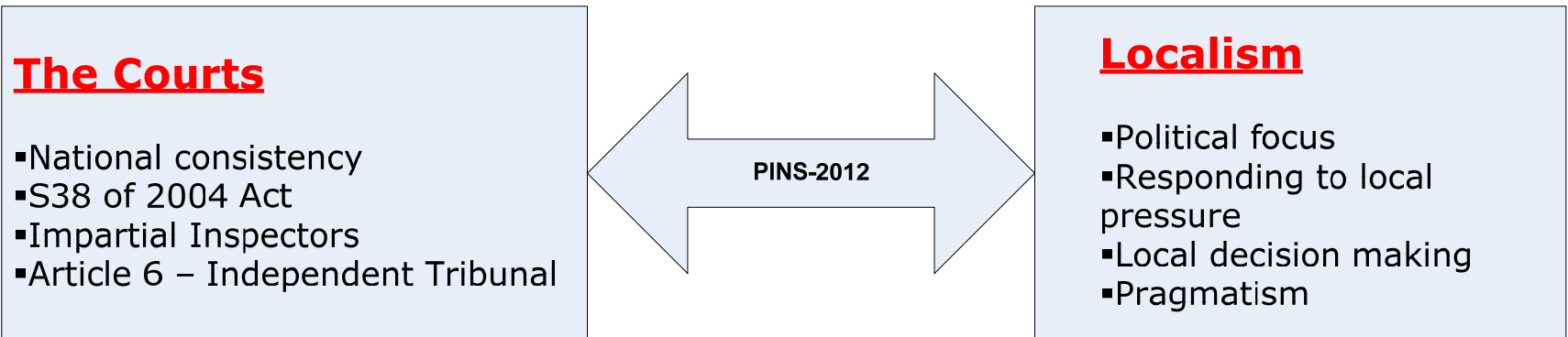
The Planning Inspectorate

## NPPF

?



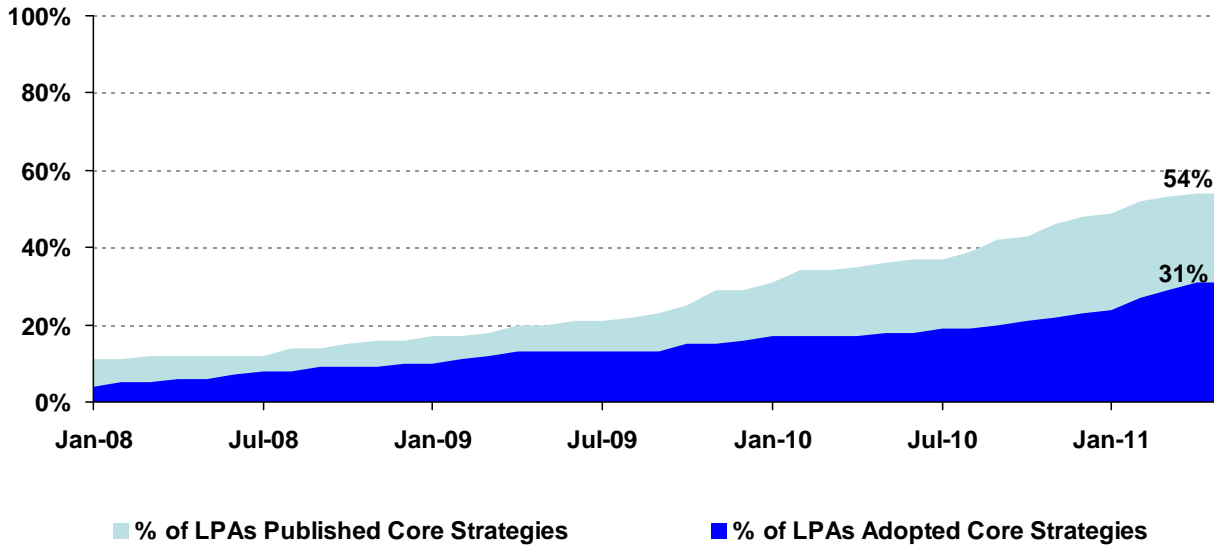
# PINS-2012: An uncomfortable role





# Plan-led at the local level

LPA's : Progress of Core Strategy publication and adoptions  
(Jan 2008 - May 2011)



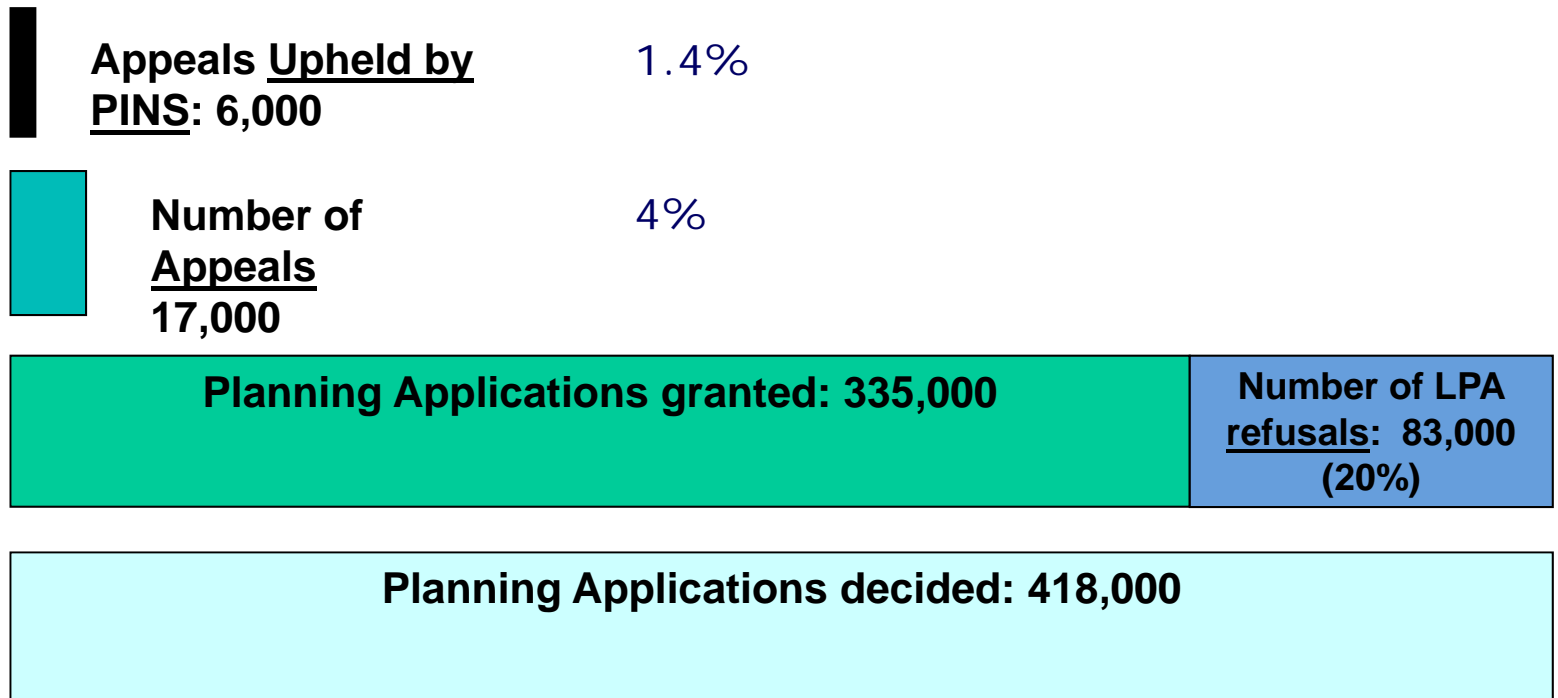
- Strong support for plans - certainty to investors/communities
- Local planning framework avoids planning by appeal
- LAs responsible for establishing right level of housing - still a need for 5 year land supply, plus 20% for choice/competition





## PLANNING APPEALS

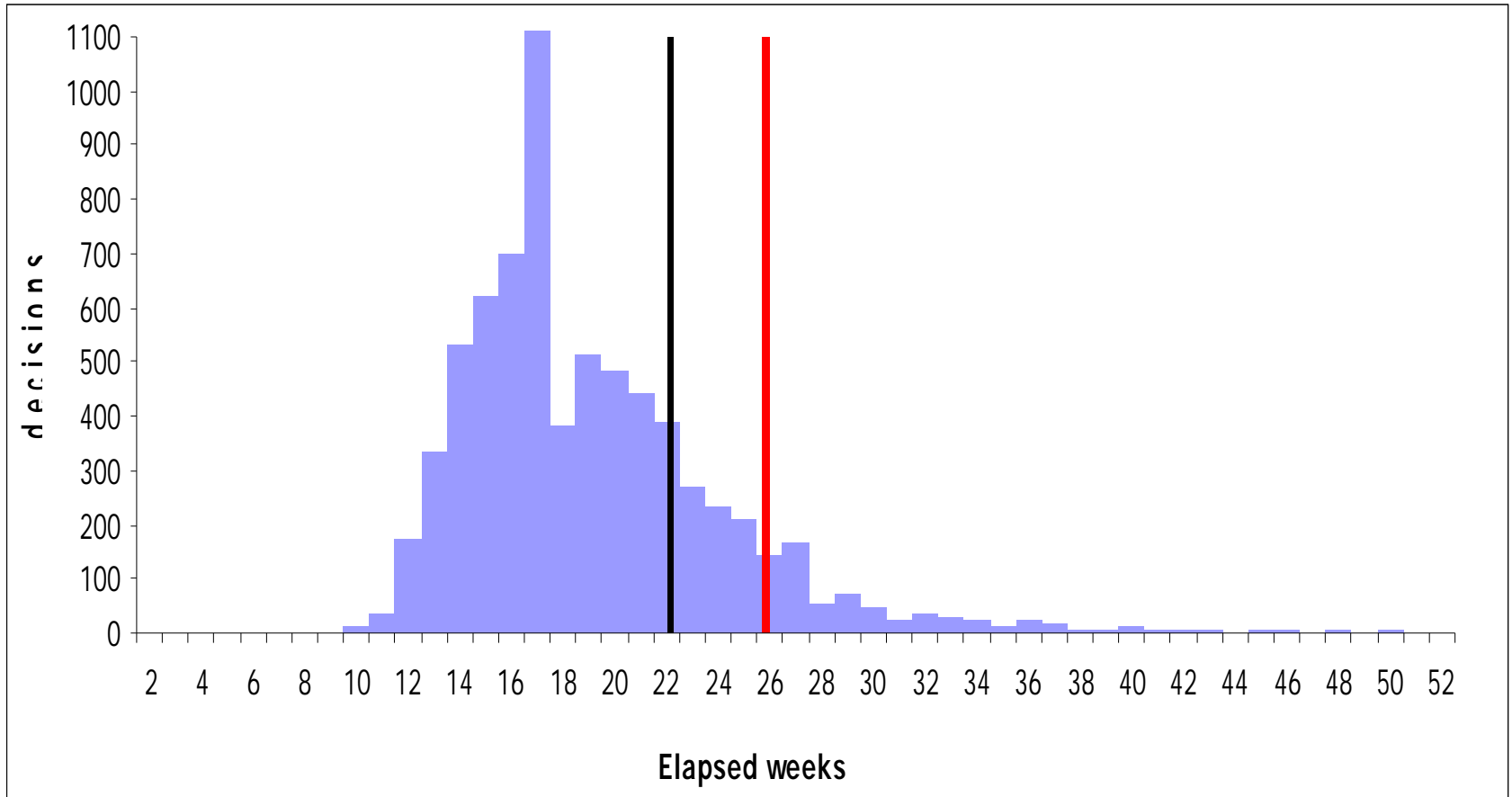
# How often does PINS overturn decisions of LPAs?





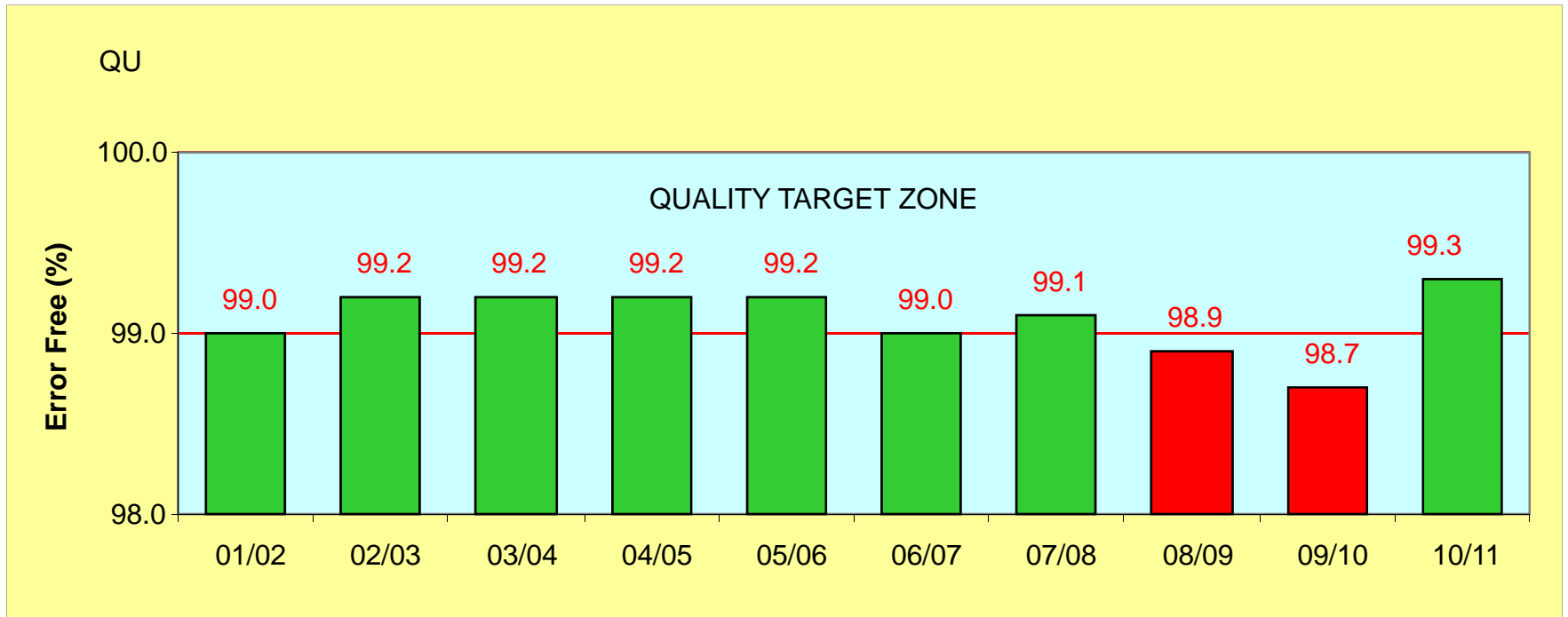
# Time to decide – Planning appeals (all procedure types)

80%  
Target 26 weeks





# Quality





# Appeals Review

- Objectives from the Autumn Statement:-
- - **faster**;
- - more **transparent**;
- - improve **consistency**;
- - increase **certainty of decision timescales**.

**3** areas of focus initially identified in the National Infrastructure Plan:-

- streamline inquiry procedure Rules;
- greater focus on pre-appeal engagement;
- greater use of electronic communication to handle appeals, share docs between parties

Will also be seeking to change behaviours and improve guidance

Intention is to consult on proposed changes in the summer.

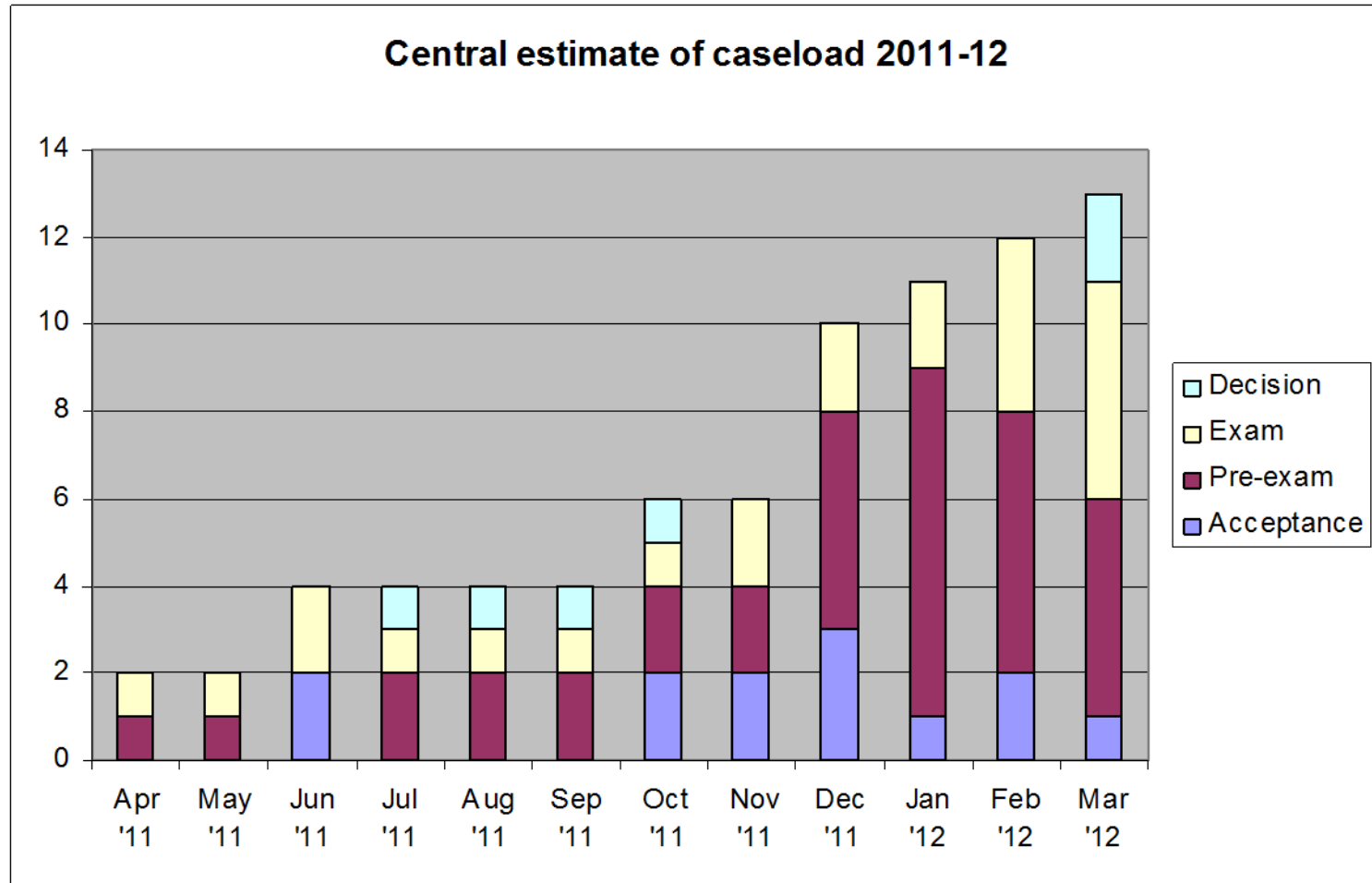


# Infrastructure

*“An all-out mission to kick-start infrastructure projects and revive the economy.”*



## National infrastructure casework





The Planning  
Inspectorate

## Stakeholders

### New Planning Reference Group

First meeting on 6 February

- **Value: Both Ways**
- **Relationship: Open & healthy**
- **Critical friends**